



KSM SOLUTIONS MTP FIBRE PRODUCTS

This solution includes MTP cables, MTP-LC harness (external), MTP Cassette and Enclosures. This was in line to support the launch of QSFP transceiver by our big OEM customers for 40G or even 100G application.

Rack Mount Enclosure

With the Servers changing to higher density inside the Data Centers, CCHK also offers various High Density Rack Mount Enclosure to suite various needs.



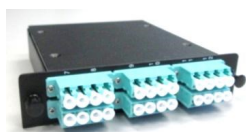
MTP Based 1U Enclosure: 36 core (18 CH), 72 core (36 CH) and 96 core (48 CH)



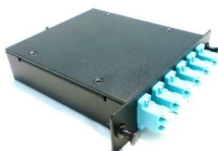
1U 36c (3x 12) Modular Enclosure



1U 72c (3x 24) Modular Enclosure



24c MTP-LC cassette



12c MTP-LC cassette



1U 96c Enclosure

www.ksm.com.au

Tel: 0061(0)2 8003 3372; Email: sales@ksm.com.au



KSM SOLUTIONS MTP FIBRE PRODUCTS

MTP-MTP Mini Round 3mm cable

MTP-MTP mini 3mm round cable assembly is superior than the ribbon cable in flexibility or crush resistance. Other Round cable construction like 1.6mm, 2mm, 4.5mm (double jacket) are also available.



MTP Round : 2mm, 3mm, 4.5mm (Double Jacket)



MTP Round 3mm with Aqua boot

Cable Properties:

No of Fiber	Jacket Dia mm	Tensile Force N		Min Bend Radius* mm		Crush Resistance N/100mm
		Short Term	Long Term	Short Term	Long Term	
12	3mm	180	90	30	45	300
24	3mm	110	60	30	45	300

UL: OFNR, OFNP Rated cable, LSZH also available

RoHs compliance

Optical Properties:

Connector Loss @ 850nm MTP (MM)

Normal MM performance < 0.60 dB

Elite MM performance (Low Loss) < 0.35 dB

Return Loss @ 850nm

Normal performance > 20 dB

Elite performance (Low Loss) > 25 dB

Connector Loss @ 1310nm MTP/APC

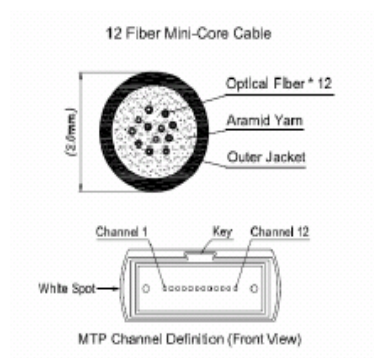
Normal SM performance < 0.75 dB

Elite SM performance (Low Loss) < 0.35 dB

Return Loss @ 1310nm MTP/APC

Normal performance > 60 dB

Elite performance (Low Loss) > 60 dB



www.ksm.com.au

Tel: 0061(0)2 8003 3372; Email: sales@ksm.com.au



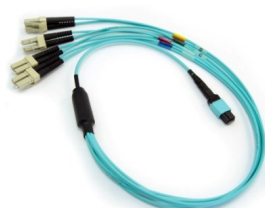
KSM SOLUTIONS MTP FIBRE PRODUCTS

Harness Cable (External)

For External applications, where the assemblies are situated outside of enclosures protection, the ruggedised Harness assembly can allow pulling, bending and sustaining the cable weight. Employing the latest design of 250 micron fibers inside 3mm round cable, it is easy for ribbonization and has overcome the side loading / twisting issue in traditional ribbon cable. This is usually used in Direct connection between the servers.



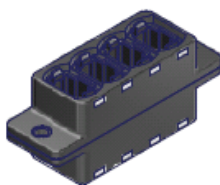
3mm MTP-Uniboot LC 24F Harness Cable



3mm MTP-LC 8F Harness Cable

MTP Coupler

Various MTP coupler are designed to meet different needs.

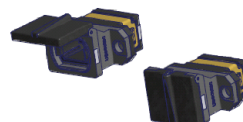


Ganged MTP Coupler 1 x 4

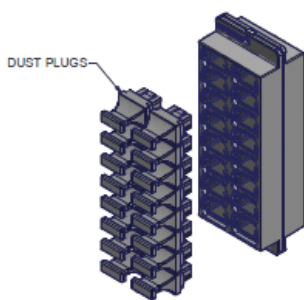


Three Main options:

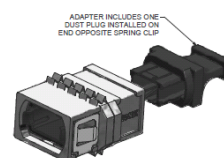
- Full Flange (Key Up to Key Down)
- Small Flange (Key Up to Key Up)
- Reduced Flange SC Foot print



Shuttered MTP Coupler



Ganged MTP Coupler 2 x 8



EMI MTP Coupler



www.ksm.com.au

Tel: 0061(0)2 8003 3372; Email: sales@ksm.com.au



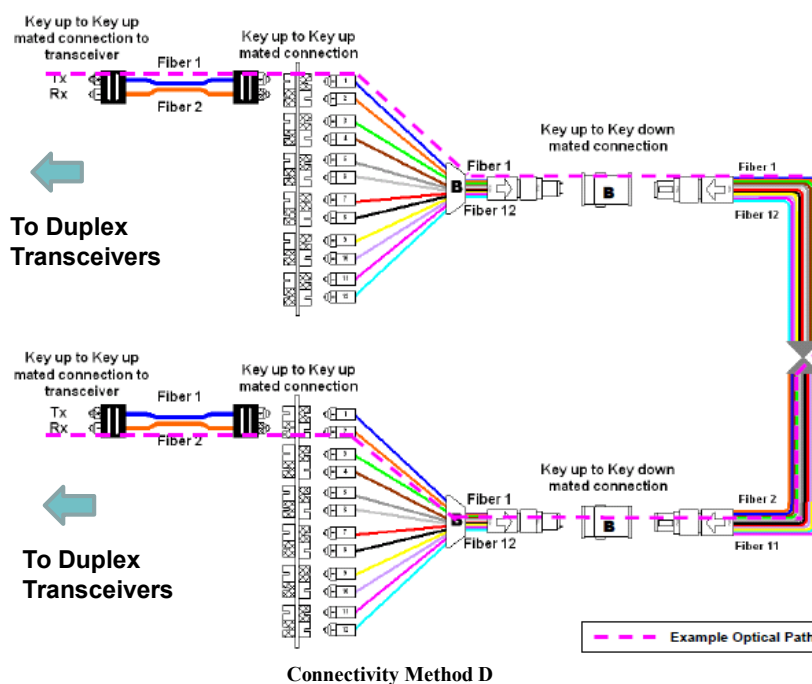
KSM SOLUTIONS MTP FIBRE PRODUCTS

Fiber Performance

Fiber Type	Max Attenuation				Bandwidth		Max Application Support Distance on 850nm SX
	850nm	1300nm	1310nm	1550nm	850nm	1300nm	10G
micron	dB / km				MHz-km		m
OM1 62.5 /125	2.70	0.80		-	200	600	33
OM2 50/125	2.50	0.80		-	500	500	82
OM3 50/125	2.50	0.80		-	1500	500	300
OM4 50/125	2.50	0.80		-	3500	500	550
G652D 9/125	-	-	0.35	0.21	-	-	-
G657A1 9/125	-	-	0.36	0.22	-	-	-

Connection Method

For Non 40G / 100G cabling connection, Connectivity Method D is used to utilize every fiber channel. As different combination of 40G / 100G switch / servers are used, please refer to the “Cabling Applications Note: Connectivity of 100G Networks” on the connection.



Connectivity Method D

